



insite

ISSUE
52

February 2020

#DecadeOfDrilling
RGS Building on
10 years of growth

REGULAR NEWS AND VIEWS FROM **ROGERS GEOTECHNICAL SERVICES**

> **KNOWLEDGEABLE. RESPONSIVE...**

AT YOUR SERVICE



THE RGS LABORATORY

GAS ALERT!  **WM3/WAC CLASSIFICATION**

NEW MONTHLY FEATURE: MINDS MATTER

ADDING VALUE THROUGH TRAINING

Welcome to RGS insite issue 51

Our regular newsletter celebrates more than a decade of drilling and keeps you up to date with RGS and industry news.

Rogers Geotechnical Services Ltd are **site investigation specialists** offering ground investigation and geotechnical services to developers, builders, structural and consulting engineers, architects, insurance companies, local authorities, piling and foundation engineers, private individuals and other geotechnical consultants.

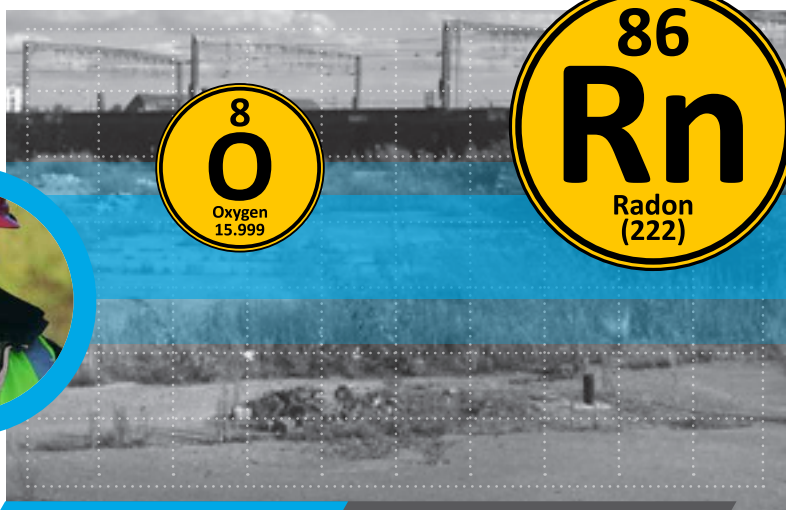
GAS ALERT!

Environmental
Geotechnical
Specialists



Ground gases are a **common problem** for construction projects, particularly on or near brownfield sites, mine workings, farms or landfills.

When gases such as methane, oxygen or CO₂ accumulate underground, they can explode. Other **underground gases** can also pose a serious risk to health. For example, radon is a carcinogen with **serious implications** for human health. While radon levels are very variable, the gas is found everywhere and tends to collect inside buildings. It's **essential** that the right measures are taken to **minimise all gas accumulations** to prevent **harm** to both people and property!



WE'RE HERE TO HELP RIGHT FROM THE START

Our experts routinely **identify and explore a site's potential ground gas risks** during the tendering process and PHASE 1 DESK STUDIES, but we also handle enquiries from **site owners who are concerned** that their site may be at risk. **Fully equipped and up-to-date with the latest standards and technologies**, our ground gas experts can offer all the guidance and specialist help you need to assess and manage your gas risks.

WE CAN:

- // CARRY OUT **GROUND GAS MONITORING**
IDENTIFY AND MEASURE GAS LEVELS
- // APPLY THE MONITORING DATA TO YOUR
CONCEPTUAL SITE MODELS
- // RECOMMEND TRUSTED INDUSTRY CONTACTS WHO CAN HELP
**WITH GAS PROTECTION DESIGN, GAS MEMBRANE INSTALLERS
AND GAS MEMBRANE VALIDATORS**
- // OFFER TECHNICAL GUIDANCE AND AFTERCARE ADVICE
IF YOU NEED **GAS PROTECTION MEASURES FOR YOUR SITE**
- // HELP YOU WITH **LATEST GUIDANCE AND TECHNICAL ADVICE**
IF YOUR SITE LIES IN AN AREA AFFECTED BY **RADON**
- // ADVISE AND HELP **IF YOUR SITE NEEDED GAS PROTECTION
BUT YOU HAVEN'T INSTALLED IT.**

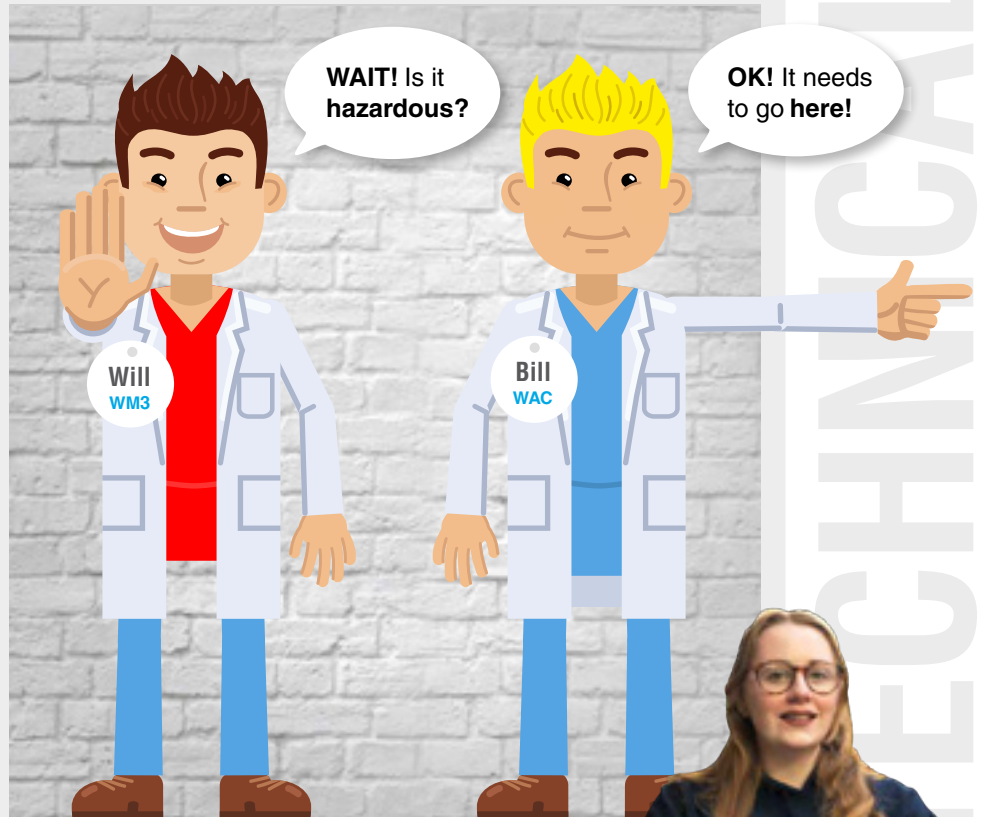


GROUND GASES ARE HIDDEN RISKS - UNTIL IT'S TOO LATE!
TAKE EARLY ACTION: CALL RGS ON 01484 604354
WE'RE HERE TO HELP.



SERVICES AND ADVICE

Waste classification (WM3) and WAC testing: they're NOT the same!



If you plan to **dispose of soils to landfill**, you'll need to know about waste classification and waste acceptance criteria (WAC).

Many people think that these two things are exactly the same, but in fact they represent **two separate and essential steps** in soil disposal. To help you understand each step and why they are so important, you can **download** our free RGS HelpSheet on Soil Disposal Guidance.

For more detail, or to find out how the requirements relate to your project, why not call and **talk to our soil disposal experts?**

The earlier you call in your project, the greater the chance of saving you fines and extra costs.

FOR FRIENDLY EXPERT ADVICE **CALL 01484 604354.**

**CONTINUAL TRAINING
AND REFRESHERS KEEP
RGS TEAMS FULLY UPDATED
ON LATEST TECHNOLOGIES,
DEVELOPMENTS AND
COMPLIANCE.**

RGS Geotechnical Engineer,
Charlotte Mason, recently led
an internal seminar updating
colleagues on WAC and WM3.



OUR TEAMS

The RGS Laboratory ...

AT YOUR SERVICE



With its UKAS accredited practices, protocols and management, the RGS laboratory is your **go-to resource** for fast, high quality logging, soils classification, soil property testing and environmental testing.

All our laboratory staff are **trained experts** and undergo regular assessment to ensure consistently high standards.

Download our new information sheet to find out how our lab services can make a difference for your business.





HEALTH AND WELLBEING

Minds Matter



We don't deny it. We at RGS are **passionate about excellent health and safety** procedures and practices, and we're keen to share that positivity.

Our popular 'Head to Toe' features in last year's Insite editions focused on PPE and its significance in protecting physical wellbeing in the workplace. For 2020, we're shining a spotlight on **mental health and wellbeing** in our new **Minds Matter** series. Mental wellbeing is **massively important** in all our lives, and the more readily its issues can be **explored, understood and shared**, the better.

Get together for a brew!

The Samaritans play a vital role in supporting anyone who's troubled or feels they're struggling. Inspired by this great organisation's **Brew Monday** initiative, we recently celebrated RGS Geotechnical Engineer **Rob Palmer's birthday** with an event we hope to repeat regularly. The whole RGS team (including our stalwart drillers and fieldworkers whose lunch is all too often eaten on a cold, windy site at this time of the year) got together to enjoy a **tasty buffet lunch** (on the house) at RGS HQ!

The rules were simple: no talking shop and no phones!

This was a time to relax and chat with friends and colleagues.

As Samaritans suggest:

“ **Getting people together to connect** helps to make us feel better and manage the ups and downs of life. **Reaching out to others** for a cuppa, a chat and a bite to eat could be the start of someone feeling less alone. ”

Mental health is increasingly high on the agendas of leading brands and influencers such as **VolkerWessels UK, Kier, Morgan Sindall and Balfour Beatty**. Why not hold **monthly get-togethers** in **your organisation** and get the mental health ball rolling?

STAFF DEVELOPMENT

Environmental
Geotechnical
Specialists



RGS training programmes: adding value to your people and your business



“ The course gave us lots of **really useful information** and we appreciated the way **the content was tailored** towards piling and ground improvement techniques. It was also interesting to see the **lab equipment in use** - and to have a go at logging some of the samples! ”

Oliver Sharp, Contracts Engineer, Roger Bullivant Ltd



Construction engineering advances all the time, and it's essential that your team members not only regularly **refresh their knowledge**, but also **keep up to speed with the latest geotechnologies, tools and regulations**.

There are wider benefits, too: **investing in high quality training** raises staff **morale, improves performance, productivity and retention**, and **enriches** your company's **credibility**.

Take **Roger Bullivant Ltd**, for example... Now there's an organisation that's renowned for its **wealth of civil engineering expertise!** But they also know that **excellence needs continual training and support**, and in late January, eleven of their skilled engineers visited RGS HQ for a full-day **Soils Description course**. The day was packed to the brim with **engaging and valuable** learning.

For example, our Technical Director, **Steve Rogers**, presented seminars on site investigation and interpreting reports; practicals in soil classification and strength consolidation testing as well as live testing in the lab were led by Laboratory Manager, **Jude Norcliffe**.

Our training can add value for **your business**, too. Covering a wide range of **ground investigation-related** themes, we offer a range of **high quality programmes** or tailored training to match your precise needs. We offer **lunchtime CPD sessions** and **seminars** as well as **half and full-day sessions** at RGS HQ or at your own premises.

TO FIND OUT MORE **WHY NOT CALL US ON 01484 604 354.**



Do you need
a phase one
environmental
desk study
report?



RGS STANDARD **RGS PREMIUM**

Contact us for more details
and to discuss your options
for this service

For more information about your investigation requirements
please don't hesitate to contact us.

Telephone on [01484 604 354](tel:01484604354)

[Click here to email us](#)

CLIENT FEEDBACK

Talk to us

“

We're always keen to hear what clients think of our service
and welcome feedback from within the industry.

”

We'd love to hear from you.

[Click here](#) to email us your comments

Environmental
Geotechnical
Specialists



Rogers Geotechnical Services Ltd
Telephone [01484 604 354](tel:01484604354)
Fax [0843 51 599 30](tel:08435159930)
Email enquiries@rogersgeotech.co.uk
www.rogersgeotech.co.uk

